



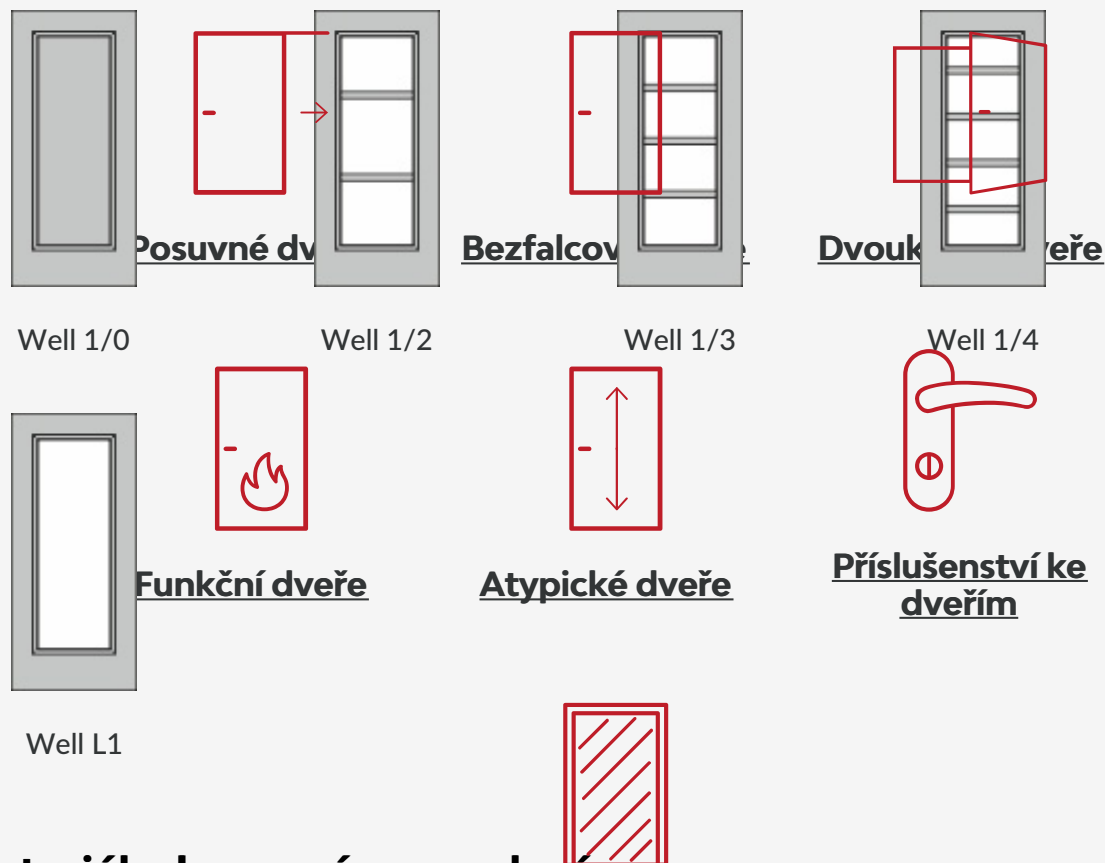
Tento obrázek dveří je pouze ilustrativní

Interiérové dveře **Well**

Nudí Vás na dveřích klasické zasklívací rámečky, pak zvolte interiérové dveře z řady Well se „šprosnou“ neboli meziskelní příčkou, která opticky rozdělí skleněnou plochu dveří na více dílů.

Možnosti provedení

Další provedení dveří **Well** a zárubně



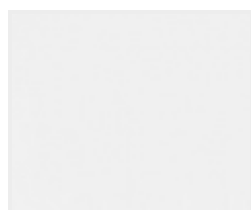
Materiál a barevné provedení

Zárubně

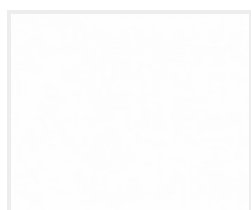


CPL laminát

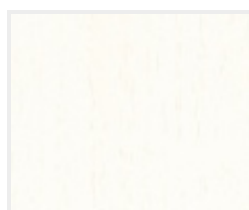
CPL laminát s Premiumkante



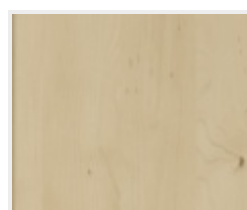
Bílý lak (9010)



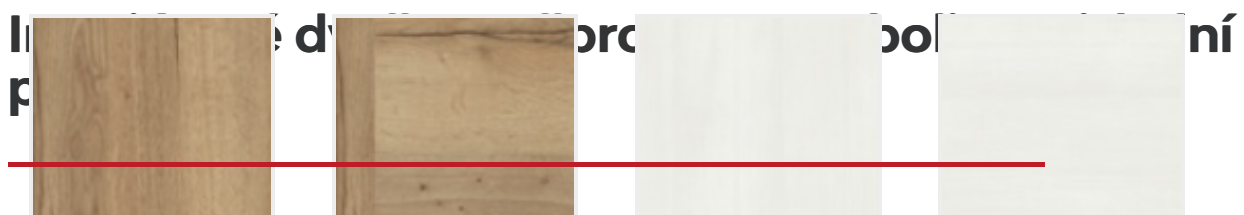
Bílá 9016



Jasan bílý



Javor PUR

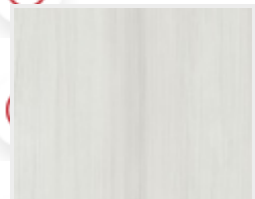


Výhody interiérových dveří:

Touch dub Altholz DA Touch dub Altholz DQ Touch white DA Touch white DQ



Pevná a stabilní konstrukce



Snadná údržba
Touch grey DA



Touch grey DQ



Karo white



Karo beige



Karo grey



Karo dark

Klasický až moderní design

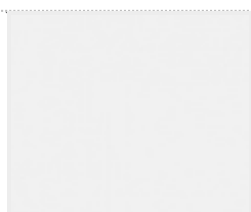
„neboli meziskelní příčkou“

ve vnějším křídle u modelu Well L1

N
Z
ě
a
u



Lak



Bílá exclusiv 9016

Bílá exclusiv

Německá kvalita

Dlouhá životnost

Zdravotně

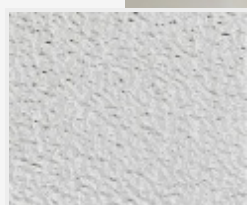


RAL nástřik

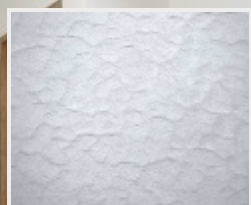
Veškeré dveře jsme schopni nalakovat jakoukoliv barvou ze vzorníku RAL, pro více informací nás [kontaktujte](#).

Možnosti prosklení

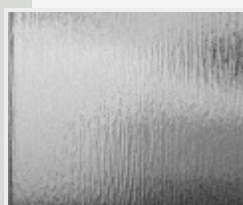
Dveře Well v realizacích



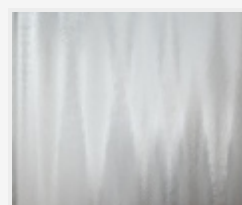
Crepí



Kathedral



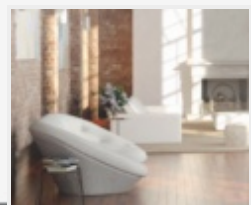
Kůra čirá



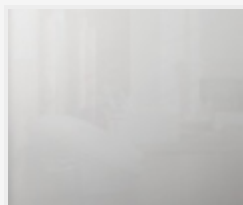
Činčila čirá



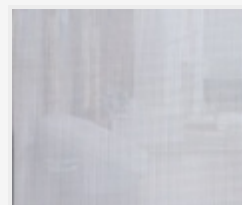
Činčila bronz



Float



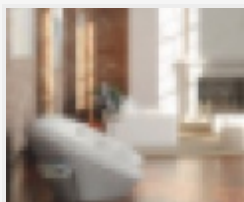
Matelux



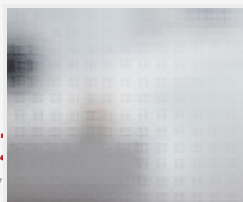
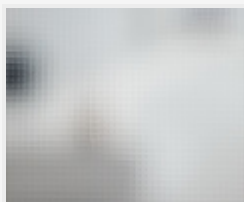
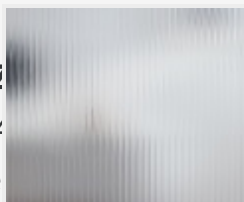
Krizet

PRŮM
Designové dveře

Již 30 let se specializujeme na prodej a montáž interiérových dveří a jsme výhradními dovozci dveří prestižní německé značky PRŮM pro Českou a Slovenskou republiku s rozsáhlou prodejní sítí.



INZ
494
obě



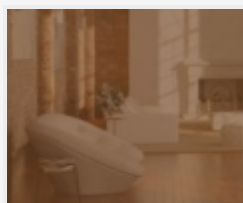
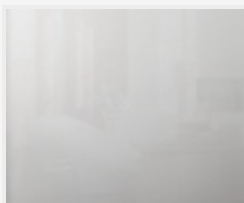
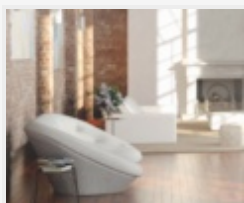
Master-vítrál

Masterlinea

Master-carre

Masterlens

[Všechny kontakty >](#)

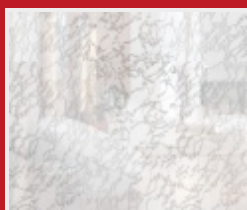


Connex čirý

Connex mléčný

Uadi bílé

Planibel bronz

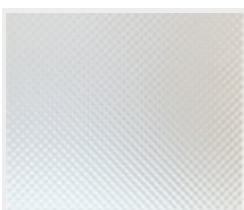
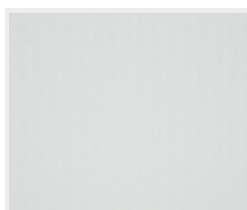


Delta čirá

Thela čirá

Silk bílý

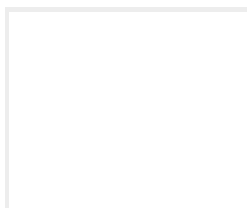
Pavé bílé



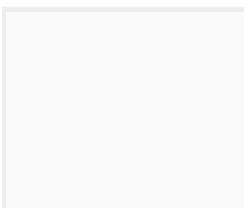
Screen

Mastersoft

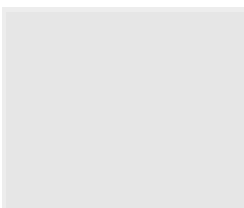
Barevné provedení stěny



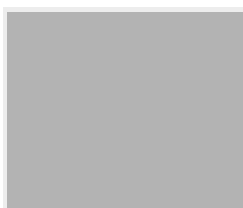
Bílá



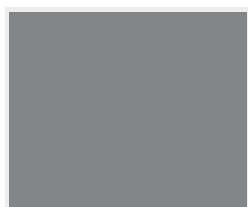
Šedá 1



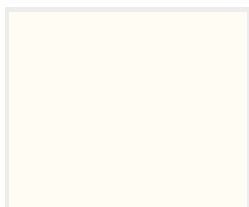
Šedá 2



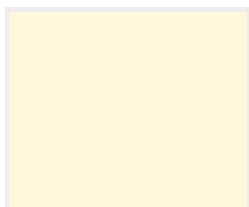
Šedá 3



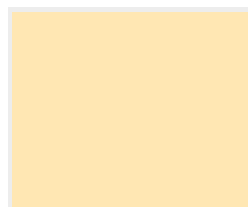
Šedá 4



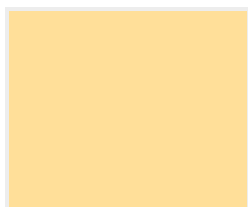
Žlutá 1



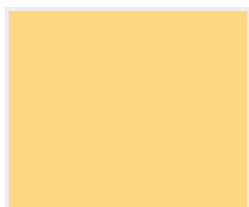
Žlutá 2



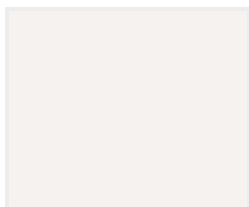
Žlutá 3



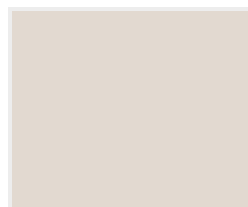
Žlutá 4



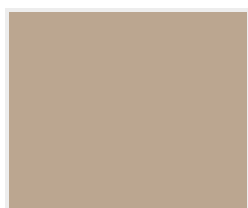
Žlutá 5



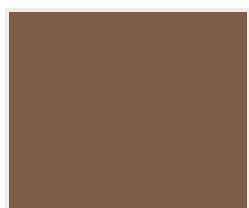
Hnědá 1



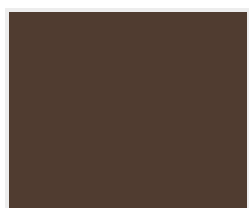
Hnědá 2



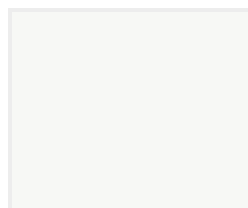
Hnědá 3



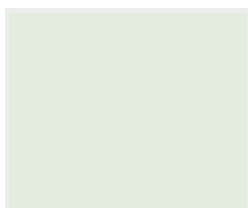
Hnědá 4



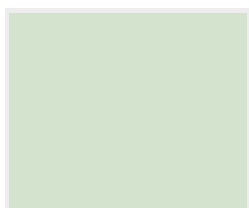
Hnědá 5



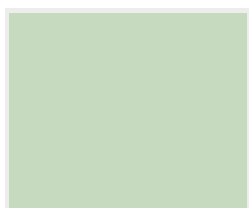
Zelená 1



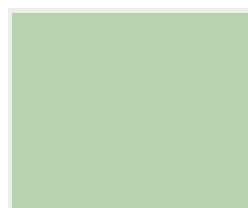
Zelená 2



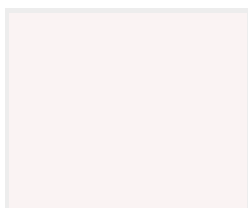
Zelená 3



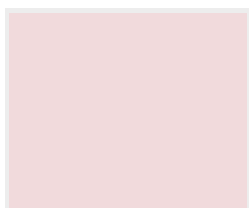
Zelená 4



Zelená 5



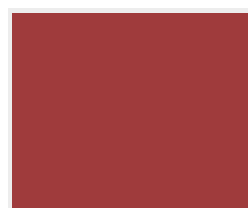
Červená 1



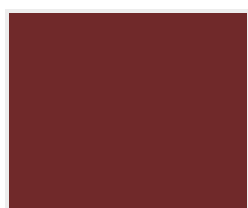
Červená 2



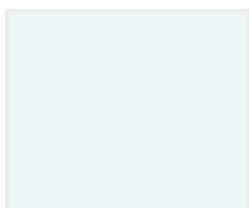
Červená 3



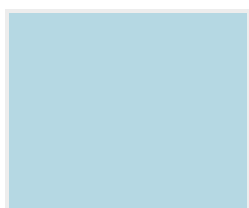
Červená 4



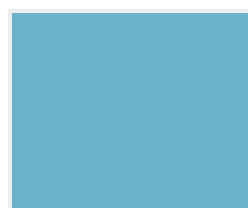
Červená 5



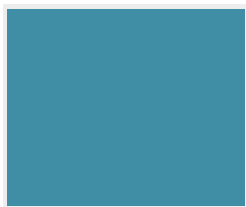
Modrá 1



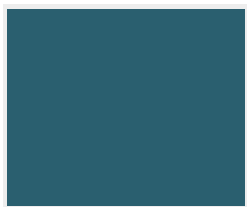
Modrá 2



Modrá 3

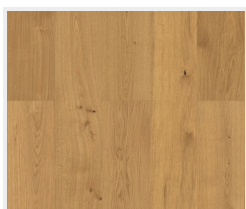


Modrá 4

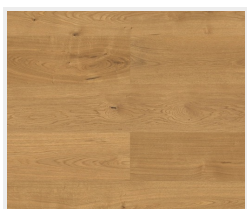


Modrá 5

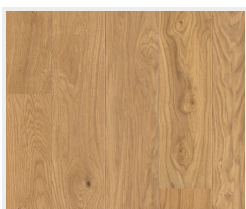
Barevné provedení podlahy



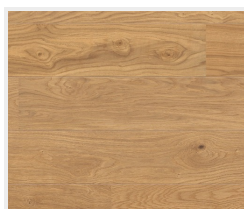
Dub Markant
(svisle)



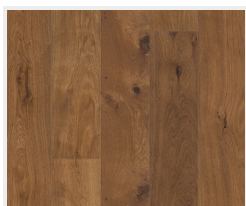
Dub Markant
(příčně)



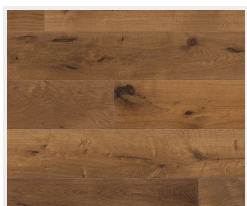
Dub Markant silk
(svisle)



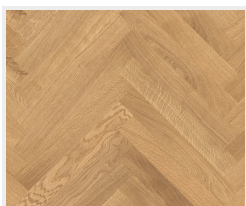
Dub Markant silk
(příčně)



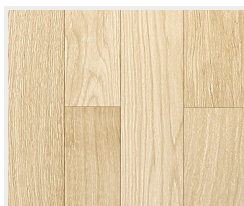
Dub Mocca
Rustikal
(svisle)



Dub Mocca
Rustikal
(příčně)



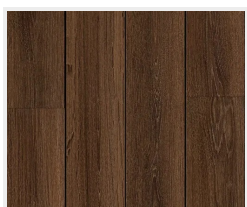
Dub Trend
(vzor parketa)



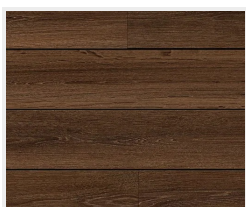
Dřevěná podlaha
světlá
(svisle)



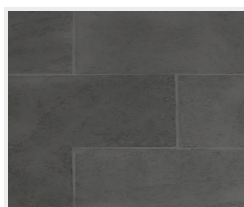
Dřevěná podlaha
světlá
(příčně)



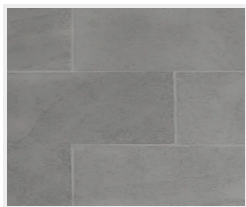
Dřevěná podlaha
tmavá
(svisle)



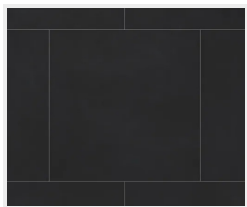
Dřevěná podlaha
tmavá
(příčně)



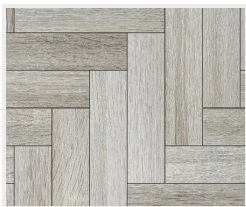
Dlažba
(tmavě šedá)



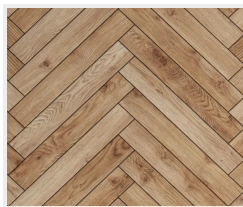
Dlažba
(světle šedá)



Dlažba
(černá)



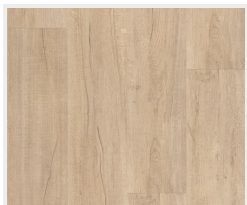
Parkety
(šedé)



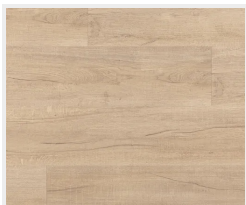
Parkety
(dubové)



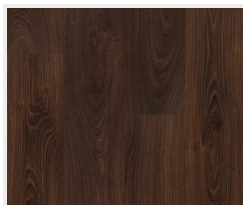
Betonová podlaha



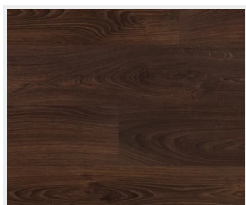
Dub světlý
(svisle)



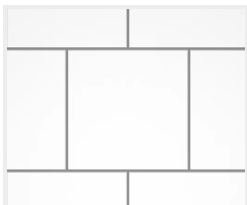
Dub světlý
(příčně)



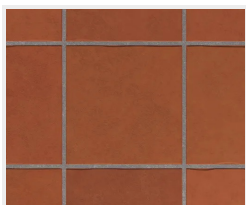
Dub tmavý
(svisle)



Dub tmavý
(příčně)



Dlažba
(bílá)



Dlažba
(terakota)